

## SPACE SAVER SERIES » Walk-in cooler and freezer

Small walk-in coldroom fit in your coner space.

### » STANDARD FEATURES

Insulation	Polyurethane Foamed-in-place, 90 mm. thick.
Finish	White Colorbond steel (food grade) interior and exterior. Interior floor to be G.I. steel topped with aluminum checker plate.
Door	White Colorbond steel self closing door. Easily replaceable magnetic gasket. Mullion heater is standard for freezer and optional for refrigerator.
Refrigerator system	Self-contained, easily removable, top mounted condensing unit. Fitted with condensate evaporator, no drain connection required. Evaporator coil located on top of the unit to maximize usable storage space.
Controller	Microprocessor controlled with digital thermometer display.
Refrigerant	R404a
Optional extra	<ul style="list-style-type: none"> <li>• Double pane glass door 700 x 1800 mm H.</li> <li>• Viewing window.</li> <li>• Stainless Steel finish.</li> <li>• Remote condensing unit.</li> <li>• Epoxy coated wire shelf.</li> <li>• Mullion heater for refrigerator.</li> </ul>

Optional epoxy coated wire shelves



Detail : 1

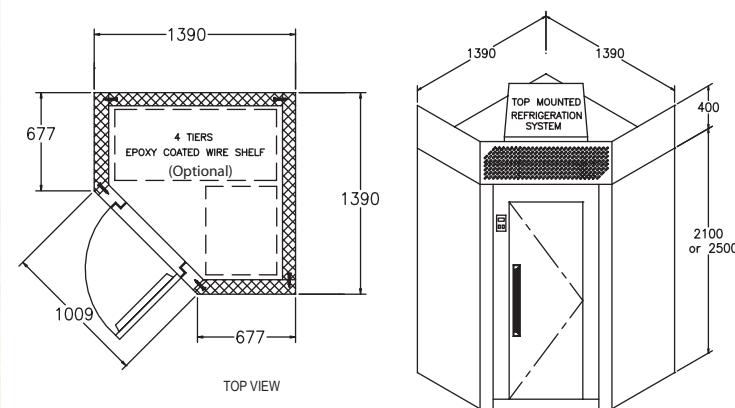


Digital display



CSS139/210

Dimension :



» TECHNICAL DATA	Refrigerated models		Freezer models	
Model number	CSS-139/210	CSS-139/250	FSS-139/210	FSS-139/250
Dimension - L x D x H (mm.)	1390 x 1390 x 2100	1390 x 1390 x 2500	1390 x 1390 x 2100	1390 x 1390 x 2500
Refrigeration capacity (Btu.)	4623	5626	5364	5729
Refrigerant	R-404a		R-404a	
Capacity cu ft / Litres.	88/2490	102/2887	88/2490	102/2887
Defrosting system.	Circulated air		Electric	
Power supply	220 W / 50 Hz / 1 Ph. (60 Hz models are available)			

Dealer :



CERTIFICATE NO. 34975



CERTIFICATE NO. 36013