

ERD - 15



Detail : 1



Detail : 2



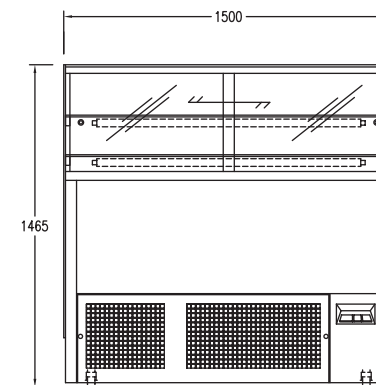
Detail : 3



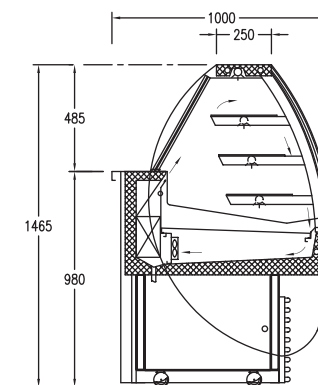
Detail : 4

Display showcase with contemporary design to highlight your product.

Dimension :



BACK VIEW



SECTION VIEW

### » STANDARD FEATURES

Features	Contemporary profile with wide angle see-through design. Undercounter display lights so products can be highly visible.
Refrigerator system	Self contained with flow through front & rear air ventilation for efficient operation. Built - in rubber castors with bullet feets as option.
Controller	Microprocessor controlled with digital temperature display.
Body & furnishing	18 gauge stainless steel top. 20 gauge stainless steel body. 50 mm thick polyurethane foam insulation. Double rear sliding glass door. Curved double pane front glass.

### » TECHNICAL DATA

Model number	ERD - 09	ERD - 12	ERD - 15
Dimension - LxDxH (mm.)	900 x 1000 x 1465	1200 x 1000 x 1465	1500 x 1000 x 1465
Temperature range		+2 °C to +5 °C	
Cooling capacity (Btu.)	1842.48	2408.87	2941.14
Compressor (Hp.)	3/4	3/4	3/4
Refrigerant	R404a	R404a	R404a
Display light (w)	18 W x 4	30 W x 4	38 W x 4
Power consumption (w)	610	686	710
Power supply	220 -240 v / 50 Hz / 1 Ph. (60 Hz models are available.)		

Dealer :



Continued product improvement is **WELBILT** Manufacturing (Thailand) Ltd., policy. Specifications are subject to change without notice.